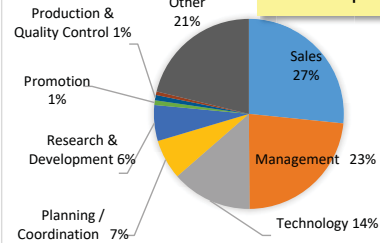


## Report [2018]

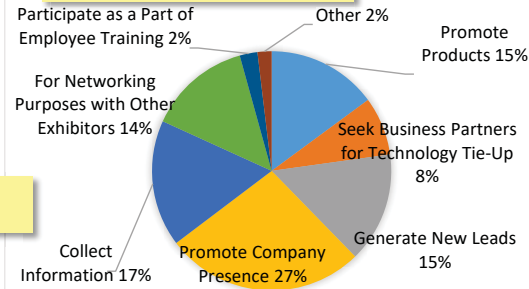
### Exhibitors and Visitors

**Exhibitors : 202**  
**Booths: 264**  
**Visitors: 7,015**

### Occupation



### Objectives of Exhibition



### Results of the business meeting

Came in contact with new partners  
**13,255 cases**  
 (69.7 cases per film)

## Venue

### BIG PALETTE FUKUSHIMA

2-52, Minami, Koriyama-City, Fukushima 963-0115, JAPAN  
 TEL: +81(0)24-947-8010 FAX: +81(0)24-947-8020  
 [http://www.bigpalette.jp/english/access/index.html]

### ACCESS

**By Express way (Tohoku Expressway)**  
 from Koriyama-Minami Interchange;  
 10 minutes by car

**By Bus**  
 from Koriyama Station 15 minutes  
 (Free shuttle bus service, on Oct 30 & 31)

### By Tohoku Shinkansen (to Koriyama Station)

from Sendai About 40minutes  
 from Tokyo About 1hour 20minutes  
 from Shin-Osaka About 4hours 10minutes

### By Airplane(to Fukushima Airport)

from Sapporo About 1hour 20minutes  
 from Osaka About 1hour 10minutes  
 (35 minutes by bus from Fukushima Airport to Koriyama Station)



## For Contact



**Energy Agency. FUKUSHIMA**  
**Fukushima Center For Industrial Promotion**

1-12 Machiikedai, Koriyama-City, Fukushima 963-0215, JAPAN  
 TEL: +81-24-959-1961 FAX: +81-24-963-0122  
 E-mail: reif-fukushima@f-open.or.jp

\*Please feel free to contact us via e-mail if you have any questions.

Website

<http://reif-fukushima.jp/english>



The 8th  
 Fukushima  
 Renewable Energy Industrial Fair

Exhibition Guide

# REIF

**Oct30 & 31, 2019**  
 10:00 – 17:00

Venue

**BIG PALETTE FUKUSHIMA**  
 Koriyama-City, Fukushima Japan

Fukushima 2019



## Promoting the New Energy Society from Fukushima to the World

Expanded introduction  
 of renewable energy

Model Construction of  
 hydrogen-based society

Building  
 smart communities

**Organizers: Fukushima Prefectural Government**  
**Fukushima Center for Industrial Promotion**

# Application Guide

REIF Fukushima provides opportunities to exhibit latest technologies, information and products related to renewable energy businesses. Based on the Fukushima plan for a new energy society, this year we set the following main themes: a) Expanded introduction of renewable energy, b) Model Construction of hydrogen-based society, c) Building smart communities.

To promote Fukushima as a leading region for a new energy future, REIF Fukushima provides opportunities to exhibit up-to-date technology and information, to participate in the business meetings, and to join networking events for the participants.

We look forward to you joining us as exhibitors.



## Exhibitors

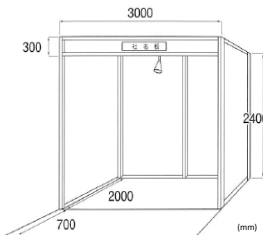
- Firms or organizations related to renewable energy and energy saving.
- Firms or organizations aiming to enter or expand their businesses to these fields.
- Research institutions or support organizations in these fields.
- Manufacturing firms including who want to participate in the business meetings.

## Number of booths

**300 booths**

## Booth size

- Basic booth
- Table x 1 (W180cm x D60cm x H70cm)
  - Stacking chair x 2
  - Electric supply (100V/10A) with 2 outlets x 1
  - Company name plate
  - Spotlight x 1



Additional fee will be required for non-basic facilities (e.g. booth decoration, extra facility installation).  
 \*Please let us know if you need additional items (the detailed information will be provided at an exhibition briefing session).  
 \* The booth scheme explained as above is subject to change.  
 \* The total width and depth are subject to change when you use 2 booths.

## Exhibition Fee

- Firms and organizations **outside of Fukushima Pref.:** **100,000 JPY/booth** (tax included)

## Presentation

10:30-16:00, Oct, 30-31

We offer exhibitors a special stage in the venue to make presentations on their products and technologies.

Fee: **20,000 JPY / 20 minutes** (tax included)

\*Basically one presentation is acceptable for an exhibitor.

## Networking Event

17:30 -, Oct 30

Please enjoy light appetizers and refreshments while networking with other exhibitors as well as meeting your business partners.

Fee: **Free of charge**



# Application Process & Schedule

## Application Deadline

Application deadline: **July 1st, 2019**

If the number of applications has reached the planned number, no further applications will be accepted even if it is received before the deadline. The deadline may be extended when there are still vacancies.

## Process & Schedule

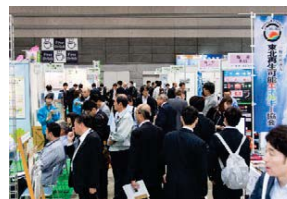
Application form can be downloaded from the REIF Fukushima 2019 website. After filling in necessary information on the form, please send us via email. We will reply after we received it.

Please contact us if there is no reply within one week.



## Decision of Exhibitor

Upon receiving the application form, we will review them and decide the exhibitors. Based on that decision, we issue an invoice for the exhibition fee. You are requested to pay your exhibition fee in full by the date we announce.



## Promotional Activities

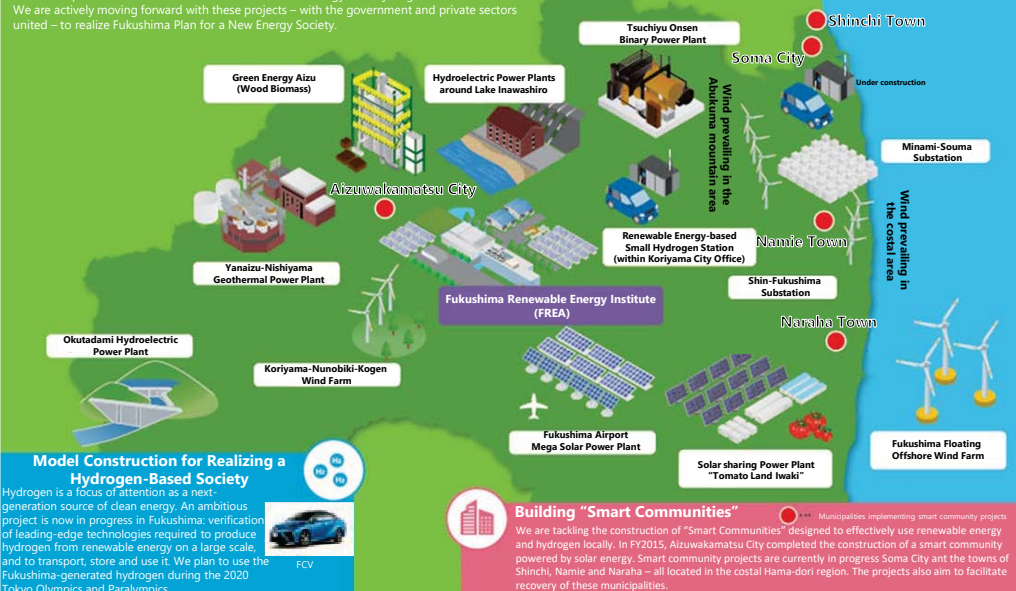
- Industry, academia and government collaborate to request distribution of poster and flyers to relevant organizations.
- Open the official home-page of the REIF Fukushima 2019.
- Distribute the exhibition guide pamphlets to related companies etc. by direct mail and e-mail magazine.

## Promoting the New Energy Society Concept: From Fukushima to the World

Expanded use of wind, solar and other forms of renewable energy. Leading-edge empirical research using one of the world's largest renewable energy-based hydrogen production facilities. The development of communities based on renewable energy and hydrogen... We are actively moving forward with these projects - with the government and private sectors united - to realize Fukushima Plan for a New Energy Society.

### Expanded Introduction of Renewable Energy

Establish a new power transmission company to develop the power grid necessary for building a wind farm in the Abukuma mountain and coastal regions.



### Model Construction for Realizing a Hydrogen-Based Society

Hydrogen is a focus of attention as a next-generation source of clean energy. An ambitious project is now in progress in Fukushima: verification of leading-edge technologies required to produce hydrogen from renewable energy on a large scale, and to transport, store and use it. We plan to use the Fukushima-generated hydrogen during the 2020 Tokyo Olympics and Paralympics.

### Building "Smart Communities"

We are tackling the construction of "Smart Communities" designed to effectively use renewable energy and hydrogen locally. In FY2015, Aizuwakamatsu City completed the construction of a smart community powered by solar energy. Smart community projects are currently in progress. Soma City and the towns of Shinchi, Namie and Naraha - all located in the coastal Hama-dori region. The projects also aim to facilitate recovery of these municipalities.